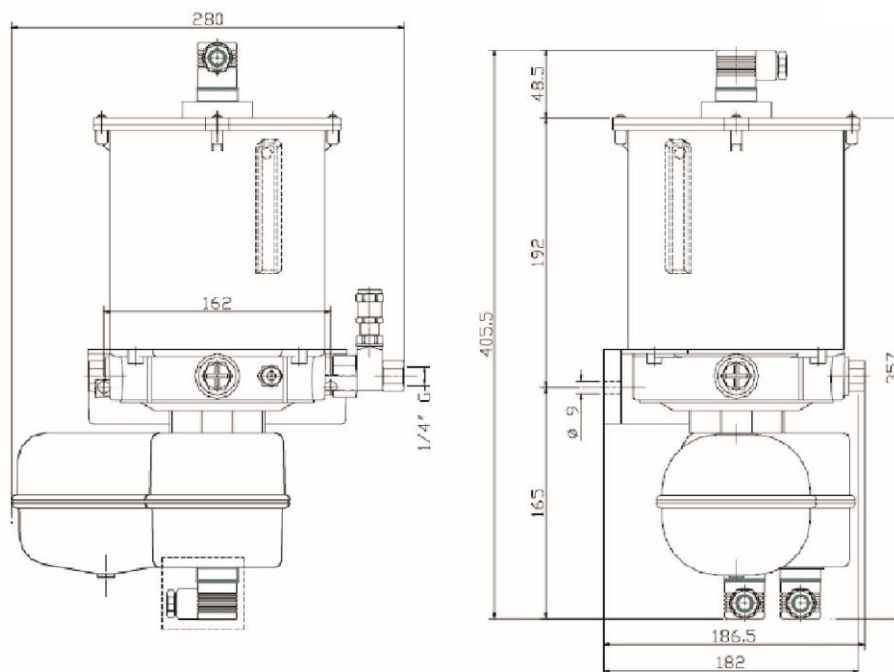
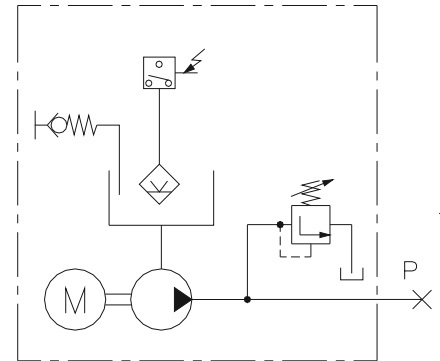


## Piston pump EZP 200

### DESCRIPTION

The EZP pump is a rugged, single or multiple-piston pump, driven by an electric motor. It is designed for use with Series Progressive Divider Valves, or may be connected directly to up to three individual lube points. Application is for all types of machinery using grease up through NLGI #2. The pump allows for mounting of one to three individual pumping elements, each having a fixed or adjustable output volume. (The standard version is provided with one pump element installed.) For applications where larger output volumes are required, the individual outputs from two or three pumping elements may be combined to a single output point. Each pumping element includes a pressure relief valve to protect the system against possible overpressure. Options include AC or DC electric motor, and two sizes of grease reservoirs.



# Piston pump EZP 200

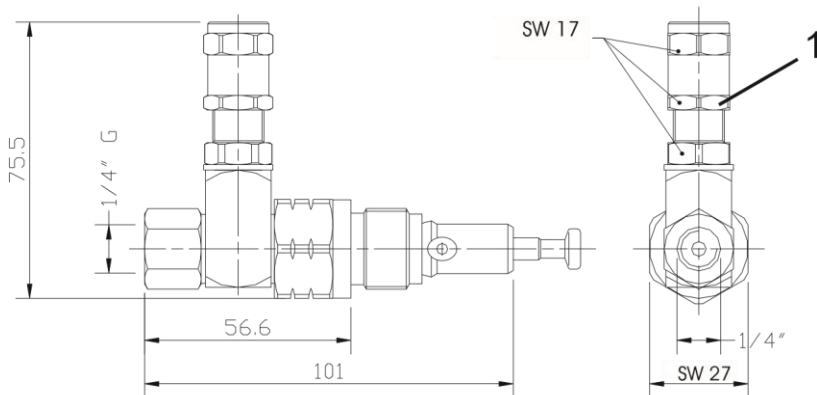
## Specification

Flow rate:	2,4 cm <sup>3</sup> /min
Lubricants: Grease NLGI 2 max.	Pressure: max. 250 bar
Relief valve :	adjustable 34-250 bar
Outlet:	1/4" BSP
Reservoir capacities:	2 kg
Motor:	24VDC, 30 W

## Adjusting the Relief Valve

Each pumping element incorporates an adjustable relief valve to protect the system against overpressure. The relief setting can be adjusted by loosening the locking nut (1, see Figure 3) and turning the cap clockwise to increase the relief pressure, and counterclockwise to decrease the relief pressure, as required by the system application.

Figure 3



Motor 24VDC, 30 W

## Low-level switch M12x1, 24V DC

